



*To get more smart a meter*

# **Catalogue**

**Keypad Prepaid Single and  
Three Phase Electricity Meter**

**2022**

## STE18-A Keypad Prepaid Single Phase Electricity Meter

IP54

Ingress protection IP54 waterproof



Up to 8 years battery life



Remote connection/disconnection

STS

STS Standard



Real-time clock

TOU

Utilities can set TOU price into meter on request



Anti-Tamper  
Magnetic field protection



LORA-RF communication (optional)



Pay by mobile payment  
M-PESA, Alipay, MTN, Airtel, etc.



STE18-A is an STS Standard compliant, keypad type, automatically connection or disconnection prepaid electricity meter. It can be top up by Stronpay vending software with 20 digital Token and communicate with AMI system via LORA-RF module.

### Compliance with Standard

- \* ISO 9001 ; ISO 14001
- \* STS Certificated

### Application:

Counting the electricity consumption of users over a period of time.

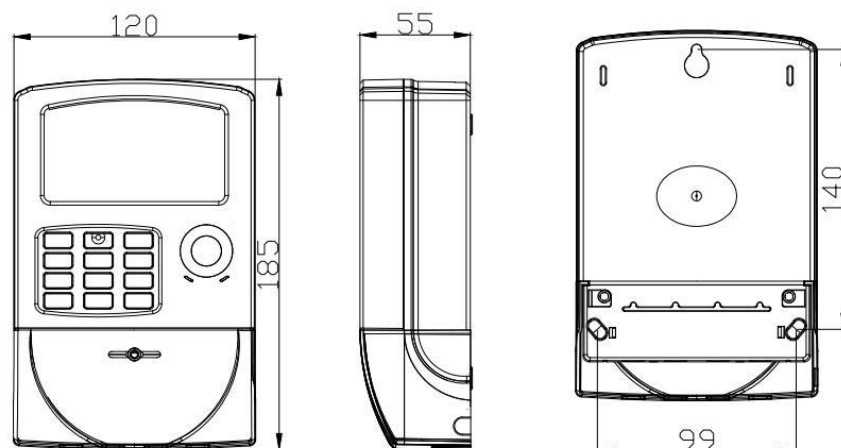
### Electrical Parameters

Nominal Voltage	230V
Working Voltage Range	70%~120%Un
Nominal Frequency	50-60Hz
Basic Current (Ib)	5A
Maximum Current (Imax)	60A
Starting Current (Ist)	20mA
Active Energy Constant	1000imp/kWh
Measurement Accuracy	Class 1.0
Power Consumption in Voltage Circuit	<2W <8VA
Power Consumption in Current Circuit	<1VA
Operation Temperature Range	-25°C-70°C
Storage Temperature Range	-40°C-85°C

### Electric Magnetic Compatibility

AC Insulation Strength		4kV at 50Hz during 1min
Impulse voltage 1.2/50 us mains connections		8kV
Electrostatic Discharges	Contact discharge	8kV
	Air discharge	16kV
Electromagnetic RF Field	27MHz-500MHz	10V/m
	100KHz-1GHz	30V/m
Fast transient burst test		4kV
Protection		Class II

### Meter Dimension



## Functions

The integrated keypad of single phase electricity meter is offered to enter recharge TOKEN and check information by short codes.

Saitecpay vending software could be integrated to local Mobile Money Payment Platform via API, like M-PESA, Alipay, MTN, Airtel, etc.

### Basic Functions

- \* Meter Recharge By Inputting TOKEN
- \* Active energy measurement
- \* MD(maximum demand measurement)
- \* Auto scroll mode display
- \* Build-in relay control
- \* Event log
- \* Low Credit Alarm

### Communication:

The meter is available with AMI system through LORA-RF or PLC module on request.

### TOU Tariff:

Meters can be set TOU Tariff by inputting corresponding TOKEN. Utilities can set 3 step prices on request.

### Anti-Tamper Functions:

Meter will automatically close the valve after detection of magnetic field and open cover event. Working normally after inputting clear tamper Token.

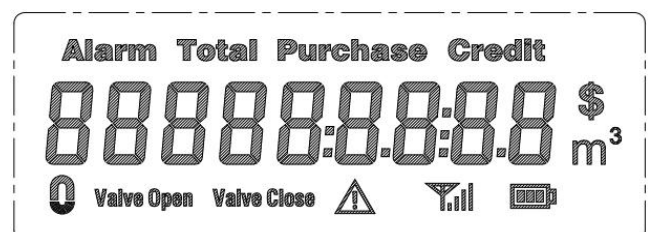
### Overdraft Collection:

Electricity Overdraft can be collected day by day or month by month.

### Information Inquiry:

Consumer could check the data like Credit Remain, Total Purchased and Total Credit by inputting the short code.

### Liquid Crystal Display:



## STE38-A Keypad Prepaid Three Phase Electricity Meter

IP54

Ingress protection IP54 waterproof



Up to 8 years battery life



Remote connection/disconnection

STS

STS Standard



Real-time clock

TOU

Utilities can set TOU price into meter on request



Anti-Tamper  
Magnetic field protection



LORA-RF communication (optional)



Pay by mobile payment  
M-PESA, Alipay, MTN, Airtel, etc.



STE38-A is an STS Standard compliant, keypad type, automatically valve controlled prepaid three phase electricity meter. It can be top up by Stronpay vending software with 20 digital Token and communicate with AMI system via LORA-RF module.

### Compliance with Standard

- \* ISO 9001 ; ISO 14001
- \* STS Certificated

### Application:

Counting the electricity consumption of users over a period of time.



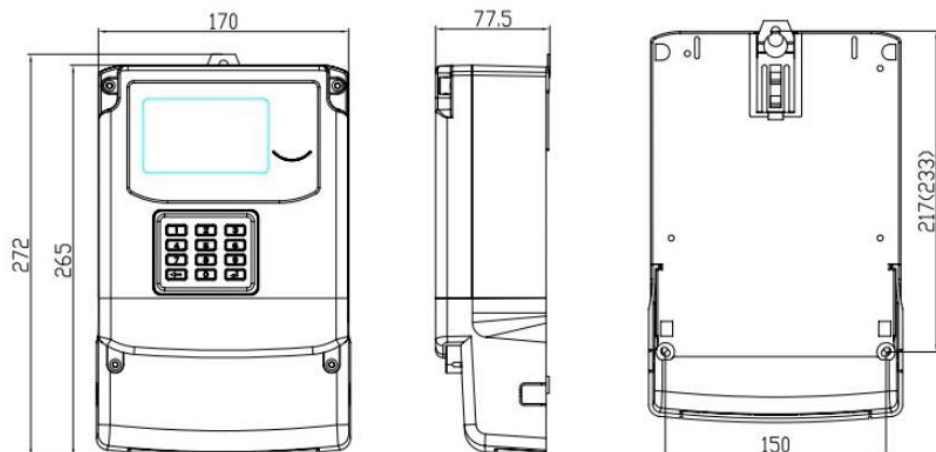
### Electrical Parameters

Nominal Voltage	3×230V
Working Voltage Range	70%~120%Un
Nominal Frequency	50-60Hz
Basic Current (Ib)	10A
Maximum Current (Imax)	100A
Starting Current (Ist)	30mA
Active Energy Constant	400imp/kWh
Active Energy Accuracy	Class 1.0
Reactive Energy Accuracy	Class 2.0
Power Consumption in Voltage Circuit	<2W <8VA
Power Consumption in Current Circuit	<1VA
Operation Temperature Range	-25°C-70°C
Storage Temperature Range	-40°C-85°C

### Electric Magnetic Compatibility

AC Insulation Strength		4kV at 50Hz during 1min
Impulse voltage 1.2/50 us mains connections		8kV
Electrostatic Discharges	Contact discharge	8kV
	Air discharge	16kV
Electromagnetic RF Field	27MHz-500MHz	10V/m
	100KHz-1GHz	30V/m
Fast transient burst test		4kV
Protection		Class II

### Meter Dimension



## Functions

The integrated keypad of three phase electricity meter is offered to enter recharge TOKEN and check information by short codes.

SAITECpay vending software could be integrated to local Mobile Money Payment Platform via API, like M-PESA, Alipay, MTN, Airtel, etc.

### Basic Functions

- \* Meter Recharge By Inputting TOKEN
- \* Active energy measurement
- \* MD(maximum demand measurement)
- \* Auto scroll mode display
- \* Build-in relay control
- \* Event log
- \* Low Credit Alarm

### Communication:

The meter is available with AMI system through LORA-RF or PLC module on request.

### TOU Tariff:

Meters can be set TOU Tariff by inputting corresponding TOKEN. Utilities can set 3 step prices on request.

### Anti-Tamper Functions:

Meter will automatically close the valve after detection of magnetic field or open cover event. Working normally after inputting clear tamper Token.

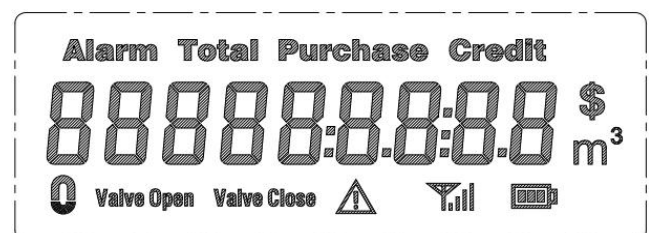
### Overdraft Collection:

Electricity Overdraft can be collected day by day or month by month.

### Information Inquiry:

Consumer could check the data like Credit Remain, Total Purchased and Total Credit by inputting the short code.

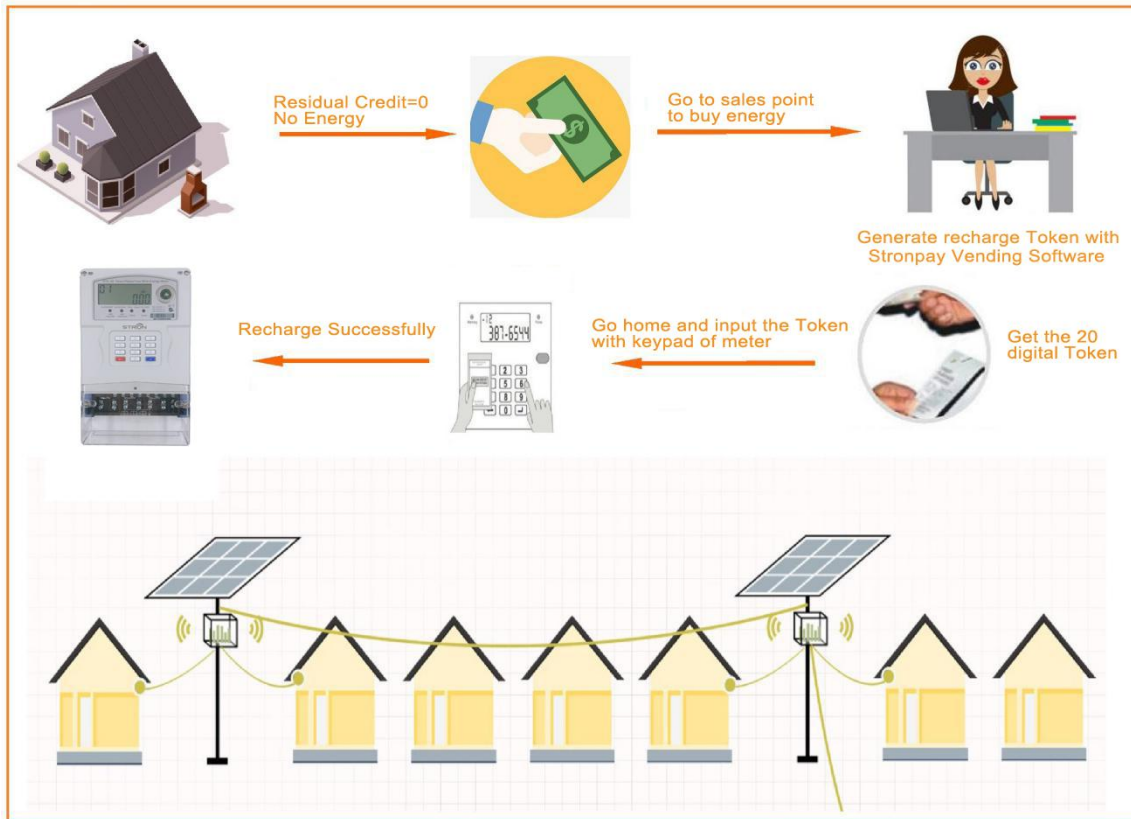
### Liquid Crystal Display:



## Three solutions to recharge prepaid electricity meter

### 1. BySAITECpay vending Software

➔ Via local sales point or handheld mobile vending unit



### Operation of vending software

1. Login vending system
2. Meter number registration
3. Customer information registration
4. Price Setting
5. Open Account
6. Vending/Topping up meters
7. Get the Token
8. Input Token to meter with keypad
9. Recharging successfully





*To get more smart a meter*

**PT. SAITEC Prima Mandiri**

Ruby Comercial Blok TC 23,  
Summarecon Bekasi, Jawa Barat

Tel. : +621 8923-9343, +62 813-1943-4370

Email : [kuwat@saitecmeter.com](mailto:kuwat@saitecmeter.com)

Website: [www.saitecmeter.com](http://www.saitecmeter.com)

